

BD MAX™ Vaginal Panel specimen collection and transfer procedure

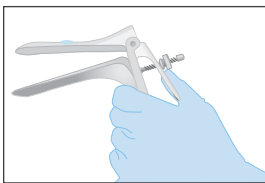
BD MAX™ UVE Specimen Collection Kit

Clinician collection procedure

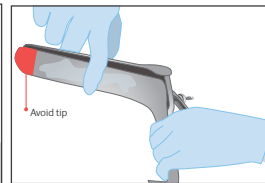
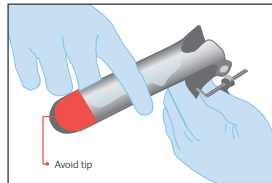
- Collect swab prior to pelvic, speculum, or bimanual exam
 - No lubricant is used for the sample technique.
1. Gently slide the swab **2 inches (5 cm)** into the vagina. If the swab does not slide easily, gently rotate the swab as you push. If it is still difficult, do not attempt to continue.
 2. Rotate the swab for 10 to 15 seconds.
 3. Withdraw the swab without touching the skin outside the vagina.

Precaution: if a speculum will be inserted prior to collecting the Vaginal Panel swab

1. Do **not** collect specimen at the posterior fornix.
2. Lukewarm water may be used to warm and lubricate the speculum.
3. If lubricant must be used, lubricant should be used sparingly (1.8 mm) and applied only to the exterior sides of the speculum blades, avoiding contact with the tip of the speculum.



Apply a 1.8 mm amount of lubricant on the speculum



Apply only to exterior sides of the speculum, avoiding the tip.*
*Avoid use of lubricants that contain carbomer (or carbopol polymers).

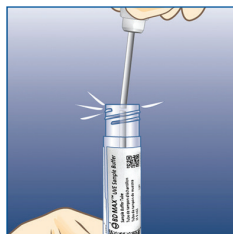
4. Avoid contact between the swab and the speculum or lubricant.
5. Insert the MAX Vaginal Panel collection swab to contact the vaginal sidewall, 2 inches (5 cm) within the vagina, rotate gently for 10-15 seconds; withdraw the swab without touching the speculum.

Swab to tube transfer procedure (clinician collected and patient self-collected)

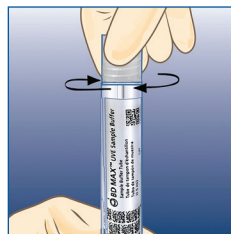
To transfer the sample



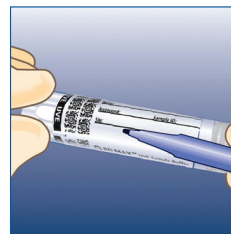
1. Fully insert the swab into the tube so that the tip is at the bottom.



2. Carefully break the shaft at the score mark. Be careful to avoid splashing.



3. Tightly re-cap the tube.



4. Label tube with patient information, date, and time collected. Be careful not to obscure the bar codes on the tube.

Swab Storage and Transport

Swab sample must be transferred within 2 hours after collection to the BD MAX™ UVE Sample Buffer Tube when kept at 2°C to 30°C.

Specimen Type:

Vaginal swab collection for BD MAX Vaginal Panel (not requiring pre-warm)

In BD MAX UVE Sample Buffer Tube prior to testing

2–30°C	2–8°C
8 days	14 days

BD, Sparks, MD 21152-0999 USA
800.638.8663

bd.com

